

THE FLOPPY GAZETTE

Volume 7, No. 1, Spring/Summer 2000

Dear Friends,

This landmark year of 2000 will be our busiest one yet and perhaps our most fun. We're currently working on four major projects all talked about in this Floppy Gazette.

STASH Spring 2000 New and Now! If you've always said, "someday my Prints will come," wait no more. Your prints are here! Out April 1 the new edition of our popular fabric CD program STASH. [STASH Spring 2000](#) contains 3300 ALL NEW fabrics from 22 top manufacturers. This is a VERY COMPLETE collection of the best new spring fabrics available fabrics so new many aren't yet in stores. You would be so jealous if you could see Sharon's and Jared's desks covered with chintzes, toiles, zebra stripes, brushed ginghams, buds, berries, bugs, bunnies, bees and every blossom ever grown, plus gorgeous hand-painted Skydyes sunsets. Yes, it's heavenly.

BlockBase new Windows version coming fall 2000 We're working on it now, and it's going to be one of our favorite programs. Diane is redrawing each block, and Margaret has spent weeks coloring. We had a great time with author [Barbara Brackman](#), who spent several days with us in mid-December, discussing search and enhancement ideas. All of us are excited about [BlockBase](#). If you have not sent in your BlockBase registration card be SURE to send it in to qualify for upgrade discount notification. All-new, true Windows 95/98 version of our popular BlockBase program.



Author Barbara Brackman and EQ's Diane McEwen-Martin plan BlockBase

BlockBase has virtually **all** pieced quilt patterns published between 1836 and 1970! This includes all pieced blocks from these collections:

- **Kansas City Star**
- **Carrie Hall**
- **Ruby McKim**
- **Lady's Art Company**
- **Nancy Cabot**
- **Nancy Page**
- Hundreds of other collections

Stitched with Love by Robyn Pandolph coming October 1, 2000 We give you a tiny sneak preview of a new media we're introducing this fall: the Magic Book. We love working with Robyn Pandolph for this first book and CD we've admired Robyn's designs, and her quiet charm, and now get to live in the special world of her beautiful appliques and new Moda fabrics for awhile. We feel quite Martha Stewartish getting photoshoot projects and ideas together (ribbon-tied organdy nursery curtains fused with Robyn's starsdelicious!). Jill is hard at work designing [Stitched with Love: A Mother's Fabric Legacy](#). More news about it this fall.

EQ Computer Lab at 2000 International Quilt Festival this fall You asked for it and you will determine whether it is a one-time happening or annual event. For the first time ever, Electric Quilt Company will sponsor and staff a complete [computer lab in Houston](#), Texas from October 31

November 5. Ten classes taught by the best EQ teachers we know: Sharon Dinsmore (also lab coordinator), Fran Gonzalez, Barb Vlack, and Liz Warner. Now's your chance to take the classes you've been asking for. See you in Houston this fall.

We've never been able to do so much in one year. We can do it now only because we have such great and enthusiastic support from you. To say thanks, we have two free gifts you can download from our Web site: 1) free [EQ4.1 upgrade](#); 2) free [EQ Show viewer](#). See more free stuff on page 3.

We hope to see lots of you, and thank you in person when we're "on the road" at shows in Lancaster, Paducah, Nashville, and Houston this year.

Happy Spring!

Dean, Penny, Ann, Lu, Margaret, Jan, Diane, Sharon, Nick, Gail, Jill, Jared and EQ the Mouse

THE FLOPPY GAZETTE

Volume 7, No. 1, Spring/Summer 2000

New STASH Spring 2000 Software (1 of 2)

Treat yourself to the very newest fabrics

It's SPRING! Birds are chirping. Trees are budding out. New fabrics are arriving in quilt stores. Give in to spring fever! Treat yourself by ordering the new STASH Spring 2000 fabric CD.



What's in STASH Spring 2000

STASH Spring 2000 has over 3300 of the choicest new spring fabrics from twenty-two fabric companies.

How STASH Spring 2000 works

Easy-to-use STASH lets you view the fabric swatches on your computer screen and create "shopping bags" for collecting and saving your favorites. Print a color swatch list of fabrics, identifying name and line, to take shopping to your fabric store. Use STASH's "Search by color" feature click any swatch, ask STASH to find fabrics that match! STASH will put together a beautiful mix of fabrics from the various manufacturers. Import the fabrics into EQ4 to use in block and quilt designs.

Fabric Trend Report

Penny Interviews Margaret and Sharon

What's new in fabric designs and color this spring? I asked our staff for feedback: Sharon Chase, who had fun collecting and scanning the fabrics for STASH, and Margaret Okuley, part-time EQ staff member, better-known as a partner in the Quilt Foundry in Maumee, Ohio.

P: You two are so familiar with the new STASH fabrics. What hot trends do you see this spring?

M: Spring always means flowers, and this year big flowers are still here Nancy



Crow has a Garden Reflections line of luscious cabbage roses for Kent Avery that look like watercolors but I'm also seeing more medium-scale prints than before look at all these the Hoffman florals for example.

S: Yes, and I've put over 800 Hoffman prints into the new STASH, so there are tons to choose from! I see earthy influences everywhere: Kona Bay has leaves, feathers, ferns, basket weaves.

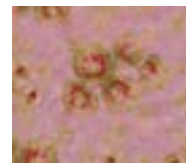


M: I've also noticed lots of small, evenly spaced repeats. Maybe this shows the interest in Provence, as well as in reproduction prints.



S: You're right Margaret. I'm seeing lots of tiny birds, bugs, bees from different companies. Marcus Brothers has a whole line called Miniatures all small scale repeats dragonflies, mixed bugs, butterflies, feathers, flowers, vegetables even dogs and cats. And didn't someone phone us last week asking for chickens? They're there!

M: Lots of fabrics and books go together this year. The Cabbage Rose Collection by Barbara Brandenburg for In the Beginning Fabrics works with her book patterns. Then Robyn Pandolph's Folk Art Wedding II for Moda will show up in the new Stitched with Love book we're doing at EQ...



S: Marsha McCloskey also has new Staples for Clothworks the sketchy lines remind me of toile, which also shows up in the Secret Forest Collection by Little Quilts from Peter Pan.

THE FLOPPY GAZETTE

Volume 7, No. 1, Spring/Summer 2000

New STASH Spring 2000 Software (2 of 2)

Treat yourself to the very newest fabrics



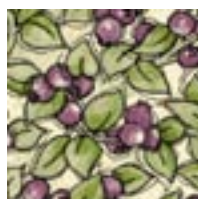
P: It looks like there's a real interest in prints reminiscent of old fabrics, tapestries and wallpapers. Jinny Beyer's Grandmother's Attic for RJR reminds me of lovely faded Victorian wallpapers. Moda has brushed ticking like old summer cottage awnings and lawn chairs. Keepsake

by Nancy Johnson-Srebro is all about Crazy Quilts. And Balson Erlanger's French Riviera is how I'd imagine French wallpaper more 50's think April in Paris.

S: Speaking of 50's, did you see Marcus Brothers' prints of poodles and Paris, and flannels with Daddy-O and Hep-cat? '50s slumber party... And Nancy Crow's Optical Illusions like '50s Op Art.

M: Ethnic designs are also big. Jennifer Sampou's done Native Plains for Robert Kaufman, and Nancy Crow has a two ethnic lines —Shibouri Japanese tie-dye techniques, and Ethnic Textures & Rhythms African-inspired grasses, shells, skeleton leaves in pigment colors.

P: What about colors? What's new this season?



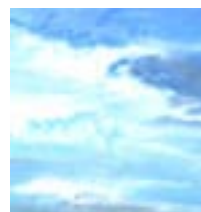
M: The whole palette seems brighter and lighter. Easter candy shades, as in Possibilities new P.S. I Love You for Peter Pan and Garden Party by Marcus Brothers.

Clear cornflower blue, sunflower yellow and apricots I think of Belle France by Marianne

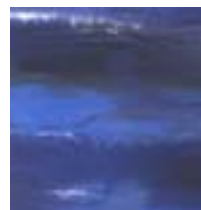
Fons & Liz Porter for Benartex. Deeper palettes show "spice, fruit and vegetable" colors: curry, eggplant, olive, sage, persimmon plus wine and and berry colors.

S: Blueberry and eggplant — they're everywhere!

Benartex even has a line called Berry Patch by Nancy Halvorsen of Art-to-Heart. And curry reminds me — these spicy colors from India are exactly what you see in Kaffe Fassett's handwoven Indian Checks and solids from Westminster. I don't see the jewel tones of last year. Colors look natural: earth/sky/fire and water colors: burnt umber, ochre, terra cotta, spruce, indigo. It looks like glitz is gone. The same thing is happening in home decorating not as much gold and shine much more iron, pottery, wood and natural fibers silk, cotton and linen.



M: There's a water-color transparency about lots of the prints, using layers of the same color to create depth. And nothing is more painterly than Mickey Lawler's hand-painted Skydyes.



P: So, to sum up what's new in 12 words or less: medium-scale and wide-spaced prints, clear pastels, spice & berry colors, nature, history & watercolor. Right?

M & S: RIGHT!

THE FLOPPY GAZETTE

Volume 7, No. 1, Spring/Summer 2000

From our Mailbox

Carol Counts the Ways

A prospective EQ user joined the Info-EQ maillist and asked a simple question. "Why should I buy Electric Quilt." Long-time EQ user Carol Giannini couldn't resist giving this simple question this silly answer:

1. When you want to retiling your fireplace, you can use EQ to plan the layout, then do all the tiling yourself instead of paying a professional tiler. Savings: about \$800 (this from personal experience).
2. You can quickly and easily plan and sew quilts, pillow covers, wall hangings, Christmas runners, whatever will please your in laws (read MIL mother in law), thus staying in their good graces and ergo, the will. Future benefit: from \$1 to millions, depending on your in laws.
3. You'll be so occupied that you'll rarely bug hubby to: take you to dinner take you to the movies take you to the ballet take you anywhere Savings: depends on how old you are and how many years of social activities you have left. Minimum estimate: 10 years at \$500 a year = \$5000
4. You'll design and sew some of the most beautiful things your husband has ever seen, making our home more homey and raising your value not only in hubby's eyes but in those of all your friends, relatives and colleagues. Value: Inestimable
5. Finally, if you don't get it, you'll spend hours each day before the computer, reading all of our mail re how much fun the rest of us are having with EQ, until, like the fairy-tale princess, with tears in your eyes and sadly sighing your last



breath, you waste away to nothing, leaving hubby to make his own dinner and do his own laundry. Now, compare the savings (\$5,800 minimum), the future benefits (from \$1 to millions), plus poor hubby's having to make dinner and do laundry for who knows how many years, against the measly price of this wonderful software. Sounds like a sale to me.

-Carol Giannini, Anchorage, Alaska

*We couldn't resist placing Carol's letter, above, with Kay's letter, below. EQ the Mouse says these are the **perfect** women to balance his checkbook!*

Dear EQ,

I wish you could see me now, doing a corroboree (happy dance). I am absolutely beside myself with joy. My EQ4 arrived today, is installed, and I've finished Lesson 3. Tears are about to arrive.

Had to buy a new eputer (mine was a Mac) and a fast modem. Cost = \$3075 Australian + \$190 for EQ4. Total = \$10,000 worth of joy.

-Kay Hobden, Australia

Note: *If you are a Mac user, you don't have to get a whole new computer to use our program. We have Mac users who have conversion software that enables them to use and enjoy EQ products.*

THE FLOPPY GAZETTE

Volume 7, No. 1, Spring/Summer 2000

Free Stuff for EQ4 Users

Lots of EQ goodies are yours for the taking. Free projects, Web backgrounds, tools, lessons, challenges and all sorts of EQ fun. To find these free gifts, visit the Web sites listed below. P.S. The generous EQ users who have worked hard to create free things for you will always appreciate a cheery e-mail thank you note if you like their free treat.

Free EQ4.1 Upgrade add new tools to your EQ4 program [click here](#).

Free EQ4 Show show off with a self-running display of your own EQ4 quilts [click here](#).

Free Web Backgrounds use EQ fabrics as backgrounds on your Web site [click here](#).

Free Challenges compete in monthly club EQ challenges posed by Barb Vlack and posted by Pat Tribbey [click here](#).

Free Round Robins join and learn with other EQ users who work on designs together via e-mail exchanges, organized by Suzanne Sanger [click here](#).

Free Info-EQ Maillist exchange messages, help and fun with other EQ users via e-mail [click here](#).

Free quilted EQ desktop calendar get a new EQ desktop calendar each month created by Carolyn Laukkonen [click here](#).

Free EQ Badge Design print and wear this badge to identify yourself to fellow EQ users at quilt shows. Badge design by Sherry Coté [click here](#).

Free Little Garden Flowers enjoy new blocks each month from Jeanne Prue [click here](#).

Free Train Quilt blocks download complete EQ projects created by April Millican [click here](#) (web page no longer exists).

Free Summer Fun project collect blocks for a summery wallhanging by Barbara Skj̄nberg [click here](#).

Free Block of the Month learn from a seven month project designed as a teaching tool by Beth Ferrier [click here](#).

Free Sunflower project collect these sunflower blocks of the month from Sue Wilkins [click here](#) (web page no longer exists).

Free Puzzler Quilt discover the design one row at a time, by Patti Anderson, who also has great EQ tutorials on her site [click here](#).

THE FLOPPY GAZETTE

Volume 7, No. 1, Spring/Summer 2000

Ask EQ (1 of 5)

Q: I get an error message when I try to open EQ4. Help?

A: If you have a problem opening EQ4, please restore the program defaults by following the directions below for the version number you have:

FOR VERSION 4.0

1. Best option: Download and install the free EQ4.1 upgrade find it on this page of the EQ Web site: <http://www.electricquilt.com/update.shtml>
1. Quickest option: Reinstall EQ4 from the EQ4.0 CD. (Do not uninstall.)
2. Choose the option: Restore Default Configuration (rather than the selected option: Install All Files).

FOR VERSION 4.1

1. At the Windows desktop choose Start Programs Electric Quilt EQ4 Setup
2. Follow the on-screen instructions to restore the default program configuration.

Note: when asked for Company name, you must type something (anything) in that line in order to make the "Next" button enabled.

Determining EQ4 Version Number

Q: How do I tell if I have EQ4.0 or EQ4.1?

A: If you can't get into EQ4 to look for version number, then, at the Windows desktop choose Start Programs Electric Quilt EQ4 Setup. If you do not see EQ4 Setup, then you have EQ version 4.0 To see the version number if you're in EQ4, choose About EQ4 from the HELP menu. See your version number (4.0 or 4.1) there. Version 4.0 owners should visit the EQ Web site and download the free EQ4.1 upgrade. The free upgrade also comes with the EQ4 Magic book by Barb Vlack and STASH.



Coloring Questions

Q: When I'm coloring, is there any way I can see more colors at one time?

A: Yes. You can specify 2, 3, or 4 rows of color chips to be displayed in the Fabrics & Colors pop-up palette.

1. Place the cursor over the colors or fabrics of the Fabrics & Colors pop-up palette, and right-click to display the context menu.
2. Choose the number of rows you want displayed. If you choose 4 rows you'll see more colors or fabrics at one time.

Q: Can I relocate a particular color in the palette that I've used in a quilt?

A: Yes. Do a color search to find any color you've used in a block or a quilt. To do a color search, have the block or quilt showing on the screen, then:

1. Click on the Spraycan tool.
2. Click on the block or quilt clicking on the color you want to find.
3. Look at the Fabrics & Colors palette and you'll see the color you were searching for.

Q: I'd like to line up the solid colors by shades. Can I?

A: Yes. You can sort the colors by yourself, or, if you have EQ4.1, you can ask EQ4 to do it for you.

1. Right-click on any solid color in the Fabrics & Colors palette.
2. Point to Sort Colors. If you have EQ4.1 you will have two choices: Manual and Automatic. Manual means you sort the colors in whatever order you want. (See page 111 in the EQ4 Design Cookbook.) Automatic means EQ4 will sort them for you. If you choose Automatic, the Automatic Sort Colors dialog box will appear. You can then choose one of the sorting options.

THE FLOPPY GAZETTE

Volume 7, No. 1, Spring/Summer 2000

Ask EQ (2 of 5)

Deleting in EQ4

Q: Can I get rid of the fabric in the Sketchbook?

A: Yes. You can delete one or all swatches at once.

1. Open your Sketchbook.
2. To delete an individual fabric, click on it, then click the Delete button. To delete all fabrics, click the Clear button. These fabrics will be gone only for this project. When you open EQ4 next, the fabrics will be back. But if you open this project, it will not have the fabrics you have deleted.

Q: How can I delete an EQ4 project?

A: You can delete projects from the Win 95/98 Desktop, or from inside EQ4.

From your Win 95/98 Desktop you can delete one, or many, projects:

1. Double-click on My Computer.
2. Double-click on C: drive (or the drive on which you installed EQ4).
3. Double-click on the EQ4 folder.
4. Double-click on the PRJ folder.
5. Click on the project you want to delete. (Or, hold down your keyboard CTRL key as you click on project after project.)
6. On the FILE menu, choose Delete. You will be asked if you are sure you want to send the project(s) to the Recycle bin.
7. Click on Yes.

From EQ4 you can delete one project at a time.

1. On the FILE menu, choose Open.
2. Click on the folder in the bottom-left marked "Click here to open a project not listed above." This takes you to where you can navigate through Windows files.
3. Click on the project you want to delete, to highlight it.

4. Press your keyboard DELETE key. You will be asked if you are sure you want to send the project to the Recycle bin.
5. Click on Yes.

NOTE: If the project or projects you delete are the ones "most recently used" by you, they will still show up on in EQ4 in the top ("Most recently used") list because they are the projects you've opened most recently. They will not show up in your bottom ("Existing projects") list, because you have deleted them so they no longer exist. As soon as you use 5 other projects, these projects will replace those currently listed in the "Most recently used" list.

Q: I know to delete a line I just drew by choosing Undo from the Edit menu, but how do I delete any other line?

A: You can delete any line by clicking on the Select tool and then clicking on the line and pressing your keyboard DELETE key. To delete more than one line, hold down your keyboard SHIFT key while clicking on lines you want to delete. Then press your keyboard DELETE key. Nothing happens? That's because your Num Lock key is on and you are using the Delete key found in your numeric keypad. Either turn off Num Lock, or use the other Delete key, found above the arrow keys.

Installing EQ Programs

Q: We have all your programs and are installing them on a new computer. Should we install them in any particular order?

A: Yes. Install in the correct order and EQ4 will link to the other programs for you. The correct order depends on what programs you have. Install the programs in this order. First install Block-Base (DOS version) and Sew Precise. Then install EQ4. Finally, install STASH. This will link EQ to your other EQ programs, and upgrade your EQ4.0 to EQ4.1.

THE FLOPPY GAZETTE

Volume 7, No. 1, Spring/Summer 2000

Ask EQ (3 of 5)

Linking EQ4 to Other EQ Programs

Q: I already have EQ4 installed, and purchased Sew Precise. How can I get the Sew Precise blocks in EQ4?

A: If your EQ4 is version 4.0, then download the free EQ4.1 upgrade. This will automatically link EQ4 to Sew Precise (and other EQ programs) as it upgrades EQ4. If your EQ4 is version 4.1, then, at the Windows desktop choose Start Programs Electric Quilt EQ4 Setup. Follow the on-screen instructions to "Link to other EQ programs." When asked for Company name, you must type something (anything) in that line in order to enable the "Next" button.

STASH & EQ4

Q: How do I save a STASH project in the PRJ folder in EQ4 so it's with all my other projects?

A: In EQ4, have the STASH project open. Then:

1. On the FILE menu, choose Save as.
2. Click the down arrow beside the Save in box, to drop the list.
3. Click the EQ4 folder, to open it.
4. Double-click the PRJ folder, to open it. Now any projects you save will be saved in the PRJ folder inside EQ4 (where your other EQ4 projects are saved).
5. Click the Save button.

Q: I opened a STASH shopping bag in EQ4, made a quilt and saved the project. Why isn't the project in my list?

A: Your project is in the STASH directory you're looking in the PRJ directory. When you open a shopping bag project, and then save it in EQ4, EQ4 saves your STASH bag project in

the same place it first got saved in the Stash directory in EQ4. It does save it as a .PJ4 project. To find your project:

1. In EQ4, click the Open an Existing Project tab (it appears immediately when you open EQ4).
2. Click the folder in the bottom-left corner of the Open an Existing Project tab (marked "Click here to open a project not listed above"). This brings up the standard Windows search directory, allowing you to open a folder anywhere on your computer.
3. Click the down arrow beside the Look in box.
4. Click the EQ4 folder.
5. Double-click the Stash folder.
6. Double-click the Bag folder. You will see your bag project here.
7. Click the project name.
8. Click the Open button. You will now have your project in the Sketchbook. If you want to save it in the EQ4 PRJ folder (where EQ4 projects are normally saved) follow the directions below for saving a Stash project in the PRJ folder in EQ4.

Border Blocks

Q: I'd like to draw right on a border on my quilt. Can I?

A: You can't draw on the quilt. But you can draw your border. To do this you change your drawing board to make a block proportioned like your border (or sash) and draw your border there. For example if say you want a border 62" long x 5" wide. Divide your border size by 2 (or 4). This gives you a block size in the same proportion as your border. For example: 62" x 5" divided by 2 = 31" x 2.5".

THE FLOPPY GAZETTE

Volume 7, No. 1, Spring/Summer 2000

Ask EQ (4 of 5)

1. Click on BLOCK - Drawing Board Setup.
2. On the General tab, change the block size to 31" x 2.5. (Or you could pick 15.5 x 1.25.)
3. Click OK. Your drawing board will now be proportionally the same as your border. Any block you draw here will look the same when you set it into your border.

Note: You will probably also want to adjust the "Snap" points. For more information see: EQ4 Design Cookbook, page 66, "Drawing a Rectangular Block."

Q: How can I find out the size of a block I've set into my border?

A: Here's how:

1. Click on the Select tool.
2. Click on one of the blocks in the border.
3. Click on FILE, point to Print and click on Block.
4. Under Block size in the dialog box, put a check in the "Size from quilt" box.
5. The size of your block, or whatever you high-lighted on the quilt, will now be shown in the Horizontal and Vertical size boxes. You can even get the size of the "spacers" this way. Write down the measurements and then exit the Print dialog without printing.

Printing Quilt Measurements

Q: How do I print out the layout information such as how many blocks, size of blocks, size of complete quilt, sashings borders, etc.

A: You can print out whatever is on the screen. To get a picture of a quilt layout (or border layout) from EQ4:

1. Get the quilt showing on the Layout tab in EQ4, or on the Borders tab.
2. Press your keyboard Print Screen button. You won't see anything happen.
3. Open Word, or whatever word processing program you use.
4. Hold down the CTRL key on your keyboard and press the V key (CTRL + V = Paste). The picture of the layout along with the layout or border measurements will paste down on the page. Alternative: You can also make a snapshot of just the layout or border dialog boxes. Choose Copy to Windows clipboard, and then paste, following the book's directions.

Monitor Settings

Q: Why does my Graph Pad disappear off the right side of the screen?

A: There are some Windows settings which may affect the look of the EQ4 workspace. Your Graph Pad disappears off the right side of your screen because your computer is set for Large Fonts. To adjust this setting:

1. At the Win 95/98 Desktop click Start - Settings - Control Panel.
2. Double-click on the Display icon.
3. Click on the Settings tab.
4. Under Font size, click the down arrow to drop the list of choices. Click on Small Fonts.
5. Click on Apply, and close all windows. Your computer will need to reboot. After it does, you will be able to see the entire Graph Pad.

THE FLOPPY GAZETTE

Volume 7, No. 1, Spring/Summer 2000

Ask EQ (5 of 5)

Q: The book shows arrow buttons in the Sketchbook. My buttons are blank. Why?

A: Several users have reported particular Windows Desktop themes which caused the EQ4 Sketchbook arrows to disappear. These “bad” themes include: “Dangerous Creatures,” “Underwater,” and “Mystery.” All others should be fine.

Q: Why are my tabs at the bottom of the screen Layer 1, Layer 2 etc cut off?

A: If the tabs along the bottom of the screen seem to be cut in half so that only part of the letters are showing, your computer is set for small scrollbars.

To adjust this setting:

1. At the Win 95/98 Desktop click Start - Settings - Control Panel.
2. Double-click on the Display icon.
3. Click on the Appearance tab.
4. Under Item, click the down arrow to drop the list of choices. Click on Scrollbar.
5. Under Size, use the up and down arrows to set the size at 16.
6. Click on Apply, and close all windows. Now you should see all of the letters on the tabs.

Unreadable Polygon

Q: I get an “unreadable polygon” error when doing Lesson 5 “Starstuck!” in EQ4 Simplified. What’s wrong?

A: Fran Gonzalez, author of EQ4 Simplified, answers: A polygon error or unreadable polygon usually indicates a serious drawing problem and the most likely suspect is the last block that you drew or modified. In this case, the culprit is probably the enlarged Lone Star. It’s possible that when you resized the star, part of it extended beyond the quilt border, causing a problem. Unfortunately, if the quilts in your Quilt

Sketchbook are gone, the bad block has corrupted your entire project. If you can open your Block Sketchbook, you can save your block designs, although you’ll have to reconstruct your quilt layout in a new project file. Now you’re going to try to save whatever you can from this bad file before you trash it. Do the following:

1. Open the project and “Save As” under another name. (Do this whenever you are trying to salvage a project. If your salvage operation doesn’t work, you can go back to the original, corrupted project and try another tactic.)
2. Open the Block Sketchbook and delete the last block that you drew or modified before you started having trouble, which in this case is probably the enlarged Lone Star.
3. Save the other blocks and your fabric palette to the Libraries. A word of warning here: There is a good chance that this “Save As” copy will be contaminated with the problems of the original file, even though you eliminated the offending block. The temptation is to recopy or redraw the offending block design and proceed with designing your project again, but it is safer, by far, to start over with a completely new project.
4. Start over with new project, opening My Library and getting out the blocks and palette that you saved in the Libraries.
5. After your new project has been completed, go into your file manager and delete the corrupted project and the “Save As” copy.

IMPORTANT NOTE: When you resize the Lone Star block in your new project file, resize to 275% instead of 300%. This just gives you a little more leeway and should prevent the polygon error from occurring again.

THE FLOPPY GAZETTE

Volume 7, No. 1, Spring/Summer 2000

New Windows BlockBase

Coming Soon with power search tools & historical data

You've been calling to ask when the Windows version of BlockBase will be ready. So here's the scoop on our plans.



Q: What is BlockBase?

A: BlockBase is the software version of the best-selling book, Encyclopedia of Pieced Quilt Patterns by Barbara Brackman.



Q: Is BlockBase currently available?

A: No. The current (DOS) version is sold out. We will release a new BlockBase (Windows 95/98 and later) later this year (no release date).



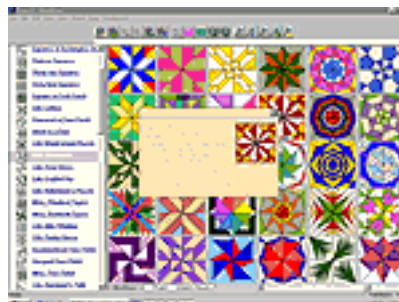
Q: Can current BlockBase owners get an upgrade discount?

A: Yes. But ONLY if you registered (mailed in the BlockBase registration card). We will mail upgrade information to all registered BlockBase owners.



Q: Can I still use the current BlockBase?

A: Yes. The DOS BlockBase will install and run on Windows 95/98 machines. (To install, click Start Programs MS DOS prompt type: CD\ (press Enter) type: A:\INSTALL.) Printing may prove problematic with "Windows only" printers, but by linking BlockBase to EQ4 (see "Linking EQ4 to other EQ programs" on page 4 of this Floppy Gazette), you can



Above is a picture of the new BlockBase program screen. The 7 blocks surrounding the screen were found by searching for blocks associated with the year 1875. Perfect for reproduction quilts!

print all BB designs directly from EQ4. BlockBase projects can be opened and used in EQ4.



Q: What's new in the Windows BlockBase?

A: It's ALL new! All 3,500 blocks from the previous version have been redrawn, recolored and annotated. More than 500 blocks have been added to this ultimate block resource. Barbara Brackman adds rich quilt historical notes especially related to reproduction quilts. And powerful search features will make BlockBase unparalleled for identifying blocks by date and period.



Q: How will we know when BlockBase is ready?

A: Watch for ads, check our Web site, ask at your local quilting store, watch your mail. If you like the old BlockBase, we guarantee you will LOVE the new BlockBase!



THE FLOPPY GAZETTE

Volume 7, No. 1, Spring/Summer 2000

Our Talented Users Show & Tell

City Anniversary Quilt

Nancy Welsch and her friends, the "Centennial Ridgeland Quilters," commemorate Jackson, Mississippi's 100th anniversary with an EQ-designed quilt, ready and waiting to hang when City Hall remodeling is completed. Nancy used EQ's tracing feature to import the logo into EQ4 and trace the design using PatchDraw. "I told EQ to print the logo the size I wanted. It took 12 sheets of paper."

The logo is surrounded by a border of BlockBase blocks, selected for their town symbolism: Road to Heaven, Magnolia Leaf, Friendship, Pinetree, Railroad Crossing, Centennial, Southern Star, Indian, Wagon Tracks, Water Wheel, Rail Fence, Sailboat, Cotton Reels, Baseball, Star of Hope, Fisherman's Reel.

Quilt in Minneapolis Exhibit



Judy Fletcher's EQ quilt, *Blooming*, is one of 1700 works of art of all kinds exhibited at the Minneapolis Institute of Arts' "Foot in the Door 2000" show from January 9 April 2, 2000. (we have bitmap) The

ground rules of this interesting exhibition restricted the size of work entered to no more than 12" on each side. To check the size they had a 12" cube that all work had to fit in. (They called it the curator) The small works were hung in a grid, making the final exhibit look like a huge quilt.

QNM Contest Finalist

Sue Runyan's quilt, *Starlight Through Time*, is a finalist for Quilter's Newsletter Magazine's "Quilts: Crossing Boundaries" contest. Sue writes, "I don't think I could have designed it without EQ4. They have size requirements for the contest and I spent hours and hours resizing blocks and borders and changing the format to get it to fit the requirements. If I had to do it by hand on graph paper it never would have been done."



Nancy Welsch's quilt presented in Jackson Mississippi

The quilt is made up of EQ4 star blocks. "I made extensive use of the graph pad to rotate some blocks and have them cross on top of or under the borders. It looks like some of the stars have broken out of their boundaries and are spinning away."

Sue's quilt will travel to France, as well as to the International Quilt Festival in Houston and the QNM gallery in Colorado. Look for it in the magazine as well. Sue is from Iowa Park, Texas.

Lynn Dash Designs

We were so pleased to discover that the lovely quilt made to advertise Jinny Beyer's Basic Realities 1999 fabrics, from RJR, was designed in EQ4. The quilt, *A Galaxy of Stars*, was designed by Lynn Dash, and we first saw the design down in Houston when we opened up the buyer's guide for International Quilt Market. There, on the inside cover, was Lynn's central medallion with a Mariner's Compass surrounded by a border of star blocks. Since Lynn was at Market, we had fun joking around with her and getting her wish list of ideas for EQ5.

Lynn also uses EQ4 to design the *Quilt for the Cure* quilts which help raise money for The Breast Cancer Research Foundation. The 1999 quilt, *Rhapsody in Rose*, appeared in the June 1999 issue of *McCall's Quilting*. Watch for Lynn's new design in the June 2000 *McCall's Quilting*, on the newstands in April.

THE FLOPPY GAZETTE

Volume 7, No. 1, Spring/Summer 2000

SNEAK PREVIEW: Robyn Pandolph Book Coming October 2000 Stitched with Love — First in “Magic Book™” Series



The Electric Quilt Company, and designer, Robyn Pandolph, will move quilt book publishing into the 21st century this October by pioneering a radically new form of book a “Magic Book™.” This book is the first in Electric Quilt Company’s “Magic Book” series, consisting of a quilt project book with a special program on a CD-ROM inside the back cover. With the interactive Windows program on the CD-ROM, you can print the patterns for Robyn’s projects using your home PC and printer. The magic starts when the you exercise your own creativity by modifying the projects on-screen — rearranging blocks, changing size, fabric and more — resulting in new projects, following Robyn’s design tips.



Robyn’s quilt, wallhanging and pillow projects can be traditionally hand-sewn, or speedily fused and machine appliqued. As a bonus, Robyn’s motifs can be printed out to use in a variety of craft projects, from stamping to rug making.



Robyn’s book, *Stitched with Love: A Mother’s Fabric Legacy*, reflects her desire to pass down to her own daughter and future granddaughters

the love of needlework Robyn received from her mother and grandmother. The book’s quilts, pillows and wallhangings are meant to be sewn for daughters and granddaughters at all stages of their life: hand-made treasures for babies and toddlers, holiday wallhangings, that first grown-up celebration tea, and weddii quilts and keepsakes.

Robyn Pandolph, workshop teacher and owner of Cabin Fever Designs pattern company, has designed fabrics for Moda Fabrics since 1998. She lives in Colorado Springs, Colorado.



THE FLOPPY GAZETTE

Volume 7, No. 1, Spring/Summer 2000

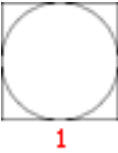
ANGLES AND WEDGES (1 of 2)


By Barb Vlack, Author of EQ4 Magic

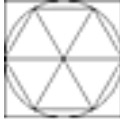
It is fun to design a block or a quilt based on pieced wedges of a circle. In EQ4.1 you can draw this kind of block in EasyDraw or in PatchDraw. Note that the drawing technique is different for each mode.

In EasyDraw:

You can divide a circle in EasyDraw into wedges of various angles by using the Partition tool.

1. On the EasyDraw worktable, click on the Arc tool and draw 4 arcs that fill the board. Your nodes should be at 12 o'clock, 3 o'clock, 6 o'clock, and 9 o'clock. If you want a 60-degree angle for a wedge, as an example, you would divide the 360 degrees in the circle (remember good ol' geometry?) by 60 and get 6. You need to draw 6 equal wedges. You have 4 arcs making a full circle. In order to get 6 points for a 6-degree wedge, you will have to find a number that is common to 4 and 6, which is 12. You want to get 12 equally spaced nodes around the circle. You will get the equally spaced nodes by using the Partition tool to divide each arc into 3 segments. 
2. Click on the dark square in the corner of the Edit tool to get the pop-up menu. Set the number in the box next to Partition to 3. Click on one arc of the circle on the drawing board and then click on the word Partition. The arc will have 2 new nodes, dividing the arc into 3 segments.
3. Repeat step 2 for the other three arcs.
4. With Advanced drawing features enabled, click on the Snap to Node tool. (To enable the Advanced drawing features, go into File, Preferences, Drawing Options, and click to put a check next to Advanced drawing features. Then go into Block, Drawing Board Setup, EasyDraw tab and check Snap to Node.)

5. Click on the Line tool and connect every other node on the circle to get a hexagon. 

6. If you want to draw wedges from this hexagon, draw a line connecting opposite corners of the hexagon. 

7. Save in Sketchbook. Save the project.

TIP: You can use the Select tool to click on one line or Select + Shift to click on several lines and then press the Delete key on your keyboard to erase any construction lines you do not want to keep.

ANOTHER TIP: You can use Ctrl+Z to undo up to 10 lines you have drawn before Saving in Sketchbook.

To draw a pentagon, Partition each arc by 5 and connect every 4th node to outline the shape. To get a wedge, you would draw a line to connect the center of the circle with each point of the pentagon.



To draw an octagon, Partition each arc by 2, or Half (click on the Half button in the pop-up Edit menu box, and connect every node.

In PatchDraw:

In PatchDraw, you have to draw around all sides of a figure in order to form a patch. Crossing lines as we do in EasyDraw does not work here. Because we already have some simple shapes to work with as tools in PatchDraw, the work is easy.

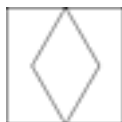
1. In the PatchDraw worktable, click on the dark triangle in the left corner of the Simple Shape tool. Click on the fat diamond the diamond on the right.

THE FLOPPY GAZETTE

Volume 7, No. 1, Spring/Summer 2000

ANGLES AND WEDGES (2 of 2)

- Put your cursor in the middle of the top line of the drawing board and drag a diamond shape that is vertical between the top and bottom of the block outline.
- Click on the Simple Shapes tool again and choose the Right Angle triangle (on the far left). Drag a triangle shape to set into the diamond. Use the Edit tool after setting a triangle to stretch a corner of the triangle to fit.
- Repeat and fill the diamond with random triangle shapes. Edit each one to fit. (Your diamond does not have to look like the illustration.) Using a closed triangle from the Simple Shapes tool makes this step easy.
- Save in Sketchbook.
- Click on the Select tool. Choose EDIT Select All. Hold down your SHIFT key while you click on the block square, to de-select it.
- Right-click on the diamond and click on Wreathmaker in the pop-up menu.
- Number of Clusters 6.
- For Cluster Spacing, slide the bar to the far right.
- For Resize Cluster, slide the bar to the far right. Click OK.
- You should see your diamond wreathed to make a 6-pointed star that needs a little closure. If the lines on the drawing board are fuzzy or muddled, click on the Refresh tool on the left toolbar.
- Click on the Select tool and carefully drag a box around one diamond to select it.



2



3-4



6-11



- In Block, Drawing Board Setup, PatchDraw, click on Auto align similar segments. Click on OK.



12-15

- Drag the selected diamond and park it so the end point of the diamond toward the center is at the center of the block drawing board.
- Repeat this step for the other diamonds.
- Save in Sketchbook. Color. Save the project.

Here is one way I have used angles and wedges. It's a project that I call my "Birthday Mandala". I took the numbers for my birthday - month, November (11) and day, 7. I interpreted the date in this design with 7 wedges divided into 11 pieces each. This design was drawn in EasyDraw. Several lines for the patches in each wedge had to be cut off by the program, since they did not end on a node. EQ4.1 will cut off lines that end in open space. I did not draw each wedge to be perfectly identical, because I thought it added interest to have unexpected subtle variations. I've used this concept to make very personalized wedding gifts or special anniversary commemorations.



THE FLOPPY GAZETTE

Volume 7, No. 1, Spring/Summer 2000

Help us keep our database up-to-date

Keeping our list of addresses and EQ-product registrations up-to-date is a constant challenge for us, but you can help.

REGISTRATION

Be sure to send us your registration card. Each program we sell includes a registration card in the package. Sending that in will give you access to technical support and reduced upgrade prices. At this time, we are not set up for on-line registration (maybe someday), so you need to send the card to us. Note: We do not sell our mailing list, so sending us this card will not cause you to receive unwanted advertisements. You'll just get the Floppy Gazette and new product information.

ADDRESS CHANGES

If you send an address change, please include your old address. We need to know which Jane Doe or Mary Smith you are. It's amazing how many duplications of names we have on our list!

Did you notice that you have a new EQ customer number? Many of you already know that the number above your first name on the address label of the print version of the Floppy Gazette is your customer number in our database program, where we keep track of your registrations and any orders you place directly with us. In mid-January we installed a new database program that gave you each a new number. Thank you for your help!

THE FLOPPY GAZETTE

Volume 7, No. 1, Spring/Summer 2000

Making Quilt Block Jewelry

By Helen Jacobson, Maxwell, Iowa

Helen makes pins and earrings as favors for the quilt show bus tours she hosts. They're terrific! We suggest using her technique to print out the Info-EQ Badge (designed by Sherry Cote) on our Web site, to identify yourself as an EQ user at quilt shows. Download Sherry's badge design as an EQ4 project at: <http://www.electricquilt.com/tech/download.shtml>



Supplies

- EQ4 and Microsoft Word
- Matt board (used in framing pictures)
- Elmer's Glue-all (or any multi-purpose glue)
- Clear Acrylic Spray (shiny or satin)
- Jewelry pins or earring backs (from hobby or fabric store)
- Inkjet photo paper (you can use card stock but photo paper is better)
- Gem-tac (permanent adhesive)

Follow these steps



1. In EQ4 make a design and color it to your liking.
2. Export the design from EQ to Word (see page 98 in the EQ4 Design Cookbook).

3. Resize it. I prefer .75 for earrings and about 1.5 to 1.75 for pins.
4. Print a practice copy on regular paper to see if you want to make any changes in size of coloring. Colors may look different than you thought printed small.
5. Print on your photo paper.
6. Rough-cut around your design. Leave a good margin.
7. Glue to the matt board with the Elmer's glue. Let dry.
8. Spray over all with the Clear Acrylic to set the ink. Let dry.
9. Cut to size. (I use rotary cutter and ruler for this.)
10. Glue earring backs and pins to the back using Gem-tac.

For gift giving I usually mount the earrings or pins onto card stock by punching holes with a paper punch in the card stock.

Make this Info-EQ Badge designed by Sherry Coté



THE FLOPPY GAZETTE

Volume 7, No. 1, Spring/Summer 2000

The “House” that Susan & Daphne Built

Daphne Greig tells us how she and Susan Purney-Mark wrote their new book, *Quilted Havens*.

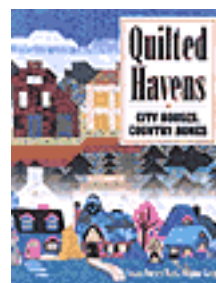


It all started when Susan said “We should write a book” while we were having a meeting over coffee in early 1998. I

said “Oh sure...what could we write it about?”. She said “houses!” and that’s where it started. We began brainstorming, making notes, designing in EQ (of course) and were thrilled to receive a book contract from the American Quilter’s Society in May of 1998.

We decided to use the “Houses” theme and develop projects with a wide variety of techniques - quick rotary cutting and piecing, templates, hand, machine and folk appliqué, foundation piecing, embellishment to name a few. We also developed real world and fantasy houses. We feel there is something for everyone in this quilted neighborhood!

Many projects were designed using Electric Quilt software - we could check designs, re-arrange, re-colour, try different borders and even print out the perfect templates and foundations for the projects. This really saved us time - we weren’t re-making actual quilts when designing.



Our group project chapter, Donation Dwelling, is an unusual one - it is written as a three act play; it is simple enough for quilters to involve their non-quilting friends in the project and it is copyright free IF the quilts made are donated to charity. We invite guilds and groups to take on the ‘roles’ and make a quilt to warm someone’s body and soul!

Daphne and Susan run Patchwork Studio in Victoria BC Canada. They are available to travel and present lectures and workshops. Contact them through their Website: www.patchworkstudio.com.